



Flight Plan & Site Survey

Created using **RPAS Wilco**®

Operation Name:	LARCS Leduc Recreation Centre Field House
Pilot Name:	
Pilot Certificate:	
Flight Start:	January 4, 2024 9:34 AM
Flight End:	January 4, 2024 11:34 AM
Flight Area (Latitude):	53° 15' 25.50" N (53.257)
Flight Area (Longitude):	113° 31' 40.00" W (-113.528)
Altitude - Radius:	Alt: 699 ft - Rad: 926.0 m (0.5 nm)
Airspace:	CONTROLLED
FIR - Contact:	CZEG - 780-890-8397

Please ensure you received all required authorizations prior to flight.

Disclaimer

This Site Survey was created using RPAS Wilco by AIM Robotics. The flight plan contained is intended only for RPAS flights on the date/time and location specified. The user accepts all responsibility for the accuracy and completeness of the information contained.

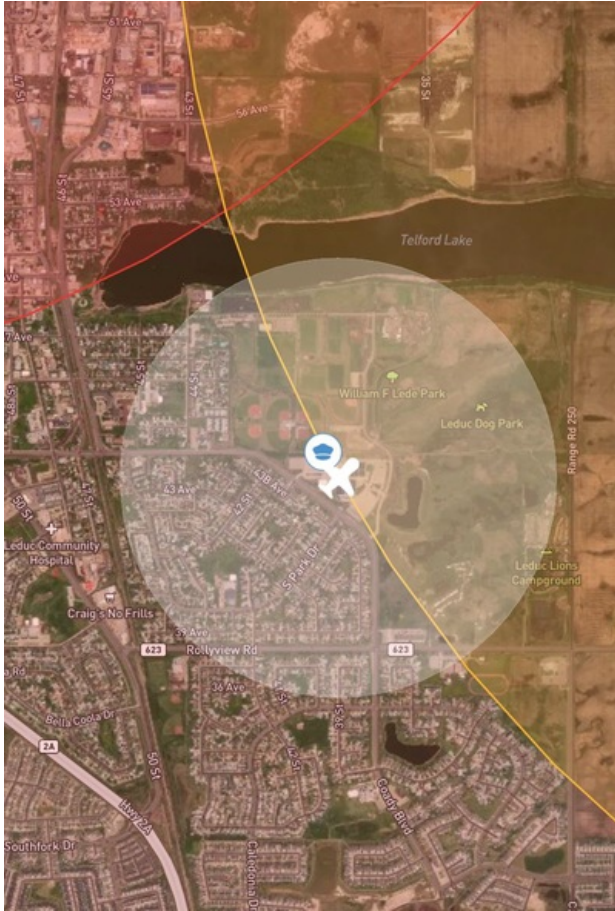
For the complete Terms & Conditions, see

<https://rpswilco.com/#/tnc>



Included

- Site Survey
- Obstacles (if available)
- Nearby Aerodromes
- Canadian Aviation Regulations
- GFA
- Aerodrome Supplements
 - METAR & TAF (if available)
 - NOTAMS
 - CFS

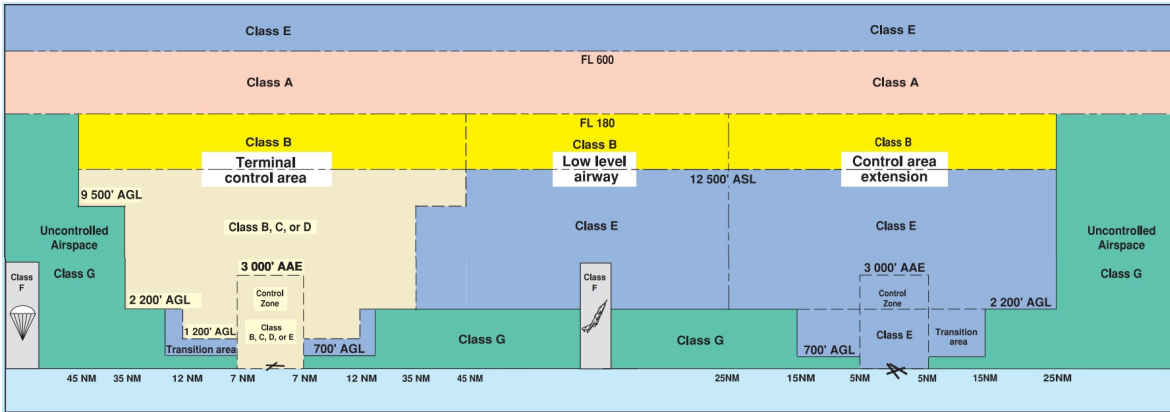
Flight Map



MAP Details

	Latitude	Longitude
 MODEL	53° 15' 25.50" N (53.257)	113° 31' 40.00" W (-113.528)
 Pilot	53° 15' 29.10" N (53.2581)	113° 31' 43.60" W (-113.5288)

Airspace Classification



Overlying Airspaces

Class	Name	Floor	Ceiling
E	Edmonton, AB CAE	12500MSL	12500MSL
B	Edmonton, AB CAE	12500MSL	18000MSL
C	Edmonton, AB TCA	9500MSL	12500MSL
B	Edmonton, AB TCA	12500MSL	18000MSL
C	Edmonton, AB TCA	7000MSL	9500MSL
C	Edmonton, AB TCA	4600MSL	7000MSL
E	T755 Airway	2200AGL	12500MSL
B	T755 Airway	12500MSL	18000MSL
C	Edmonton Intl CZ	SFC	4600MSL
C	Edmonton, AB TCA	4100MSL	4600MSL
C	Edmonton, AB TCA	3400MSL	4100MSL

Nearest Aerodromes & Distance from Operation

GARTNER (CFQ7 - AERODROME - Reg)	Lat: 53.282	Long: -113.455	5.577 KM	3.01 NM
EDMONTON INTL (CYEG - AERODROME - Cert)	Lat: 53.31	Long: -113.579	6.798 KM	3.67 NM
CALMAR (MAPLELANE FARM) (CMF2 - AERODROME - Reg)	Lat: 53.184	Long: -113.739	16.242 KM	8.77 NM
CREEKVIEW (CRK2 - AERODROME - Reg)	Lat: 53.079	Long: -113.509	19.842 KM	10.71 NM
WIZARD LAKE (CWL3 - AERODROME - Reg)	Lat: 53.116	Long: -113.772	22.603 KM	12.2 NM

Canadian Aviation Regulations

Division III — General Operating and Flight Rules

For full listing please visit : <https://laws-lois.justice.gc.ca/eng/regulations/SOR-96-433/FullText.html#s-901.27>

Visual Line-of-sight

- **901.11 (1)** Subject to subsection (2), no pilot shall operate a remotely piloted aircraft system unless the pilot or a visual observer has the aircraft in visual line-of-sight at all times during flight.
- **(2)** A pilot may operate a remotely piloted aircraft system without the pilot or a visual observer having the aircraft in visual line-of-sight if the operation is conducted in accordance with a special flight operations certificate — RPAS issued under section 903.03.

Procedures

- **901.23 (1)** No pilot shall operate a remotely piloted aircraft system unless the following procedures are established:
 - **(a)** normal operating procedures, including pre-flight, take-off, launch, approach, landing and recovery procedures; and
 - **(b)** emergency procedures, including with respect to
 - **(i)** a control station failure,
 - **(ii)** an equipment failure,
 - **(iii)** a failure of the remotely piloted aircraft,
 - **(iv)** a loss of the command and control link,
 - **(v)** a fly-away, and
 - **(vi)** flight termination.
- **(2)** If the manufacturer of the remotely piloted aircraft system provides instructions with respect to the topics referred to in paragraphs (1)(a) and (b), the procedures established under subsection (1) shall reflect those instructions.
- **(3)** No pilot shall conduct the take-off or launch of a remotely piloted aircraft unless the procedures referred to in subsection (1) are reviewed before the flight by, and are immediately available to, each crew member.
- **(4)** No pilot shall operate a remotely piloted aircraft system unless the operation is conducted in accordance with the procedures referred to in subsection (1).

Site Survey

901.27 No pilot shall operate a remotely piloted aircraft system unless, before commencing operations, they determine that the site for take-off, launch, landing or recovery is suitable for the proposed operation by conducting a site survey that takes into account the following factors:

- **(a)** the boundaries of the area of operation;
- **(b)** the type of airspace and the applicable regulatory requirements;
- **(c)** the altitudes and routes to be used on the approach to and departure from the area of operation;
- **(d)** the proximity of manned aircraft operations;
- **(e)** the proximity of aerodromes, airports and heliports;
- **(f)** the location and height of obstacles, including wires, masts, buildings, cell phone towers and wind turbines;
- **(g)** the predominant weather and environmental conditions for the area of operation; and
- **(h)** the horizontal distances from persons not involved in the operation.

Operations at or in the Vicinity of an Aerodrome, Airport or Heliport

- **901.47 (1)** No pilot shall operate a remotely piloted aircraft at or near an aerodrome that is listed in the *Canada Flight Supplement* or the *Water Aerodrome Supplement* in a manner that could interfere with an aircraft operating in the established traffic pattern.
- **(2)** Subject to section 901.73, no pilot shall operate a remotely piloted aircraft at a distance of less than
 - **(a)** three nautical miles from the centre of an airport; and
 - **(b)** one nautical mile from the centre of a heliport.
- **(3)** No pilot shall operate a remotely piloted aircraft at a distance of less than three nautical miles from the centre of an aerodrome operated under the authority of the Minister of National Defence unless the operation is conducted in accordance with a special flight operations certificate — RPAS issued under section 903.03.

Records

- **901.48 (1)** Every owner of a remotely piloted aircraft system shall keep the following records:
 - **(a)** a record containing the names of the pilots and other crew members who are involved in each flight and, in respect of the system, the time of each flight or series of flights; and
 - **(b)** a record containing the particulars of any mandatory action and any other maintenance action, modification or repair performed on the system, including
 - **(i)** the names of the persons who performed them,
 - **(ii)** the dates they were undertaken,
 - **(iii)** in the case of a modification, the manufacturer, model and a description of the part or equipment installed to modify the system, and
 - **(iv)** if applicable, any instructions provided to complete the work.
- **(2)** Every owner of a remotely piloted aircraft system shall ensure that the records referred to in subsection (1) are made available to the Minister on request and are retained for a period of
 - **(a)** in the case of the records referred to in paragraph (1)(a), 12 months after the day on which they are created; and
 - **(b)** in the case of the records referred to in paragraph (1)(b), 24 months after the day on which they are created.
- **(3)** Every owner of a remotely piloted aircraft system who transfers ownership of the system to another person shall, at the time of transfer, also deliver to that person all of the records referred to in paragraph (1)(b).

ALBERTA

AERODROME/FACILITY DIRECTORY

EDMONTON / GARTNER AB

CFQ7

REF	N53 16 54 W113 27 18 15S 15°E (2013) UTC-7(6) Elev 2390' VTA A5015 LO2	
OPR	L. Gartner 780-660-7621 or 250-428-7621 Reg PPR	
PF	B-1 D-2,3,4,5,6	
FLT PLN		
FIC	Edmonton 780-890-8386 or Edmonton 866-WXBRIEF (Toll free within Canada) or 866-541-4102 (Toll free within Canada & USA)	
ACC	Edmonton IFR 888-358-7526	
SERVICES		
FUEL	100LL	
OIL	15W50 (Shell)	
RWY DATA	Rwy 09(091°)/27(271°) 3000x50 GRASS	
RCR	Opr	
LIGHTING	09-(LO), 27-(LO) ARCAL-123.45 type J	
COMM		
MF	Edmonton Intl twr 118.3 (CAR 602.98)	
PRO	For VFR rtes see Edmonton VTPC or as directed by ATC. Transponder rqr'd in CZ. TRANSPONDER MANDATORY - Acft operating in Edmonton Class C require a discrete transponder code which may be obtained by filing a flt pln or ctc 888-358-7526 at least 30 min prior to entering. Air traffic advs'y freq 123.2 Edmonton City Area in Class G and E airspace.	

ALBERTA

AERODROME/FACILITY DIRECTORY

EDMONTON INTL AB

CYEG



REF	N53 18 36 W113 34 46 6SSW 15°E (2013) UTC-7(6) Elev 2373' VTA A5015 LO2 HI3 T1 CAP OC
OPR	Edmonton Regional Airports Authority 780-890-8327 H24 Cert Ldg fees
PF	A-1,2,3,4,5,6
CUST	AOE 888-226-7277 PN
FLT PLN	
FIC	Edmonton 866-WXBRIEF (Toll free within Canada) or 866-541-4102 (Toll free within Canada & USA) or 780-890-8386
ACC	Edmonton IFR 888-358-7526
WX	METAR H24.
DUAT	TAF H24, issue times: 00, 03, 06, 09, 12, 15, 18, 21Z. Executive Flight Centre; Edmonton Shell Aerocentre

ALBERTA

AERODROME/FACILITY DIRECTORY

EDMONTON INTL AB (Cont'd)

CYEG

SERVICES	
FUEL	100LL, JA-1, JB, FSII, HPR
OIL	All
S	1,2,3,4,5,6
ARFF	DESIGNATED CAT 9 Discrete emerg freq 122.675
SUP FL	D & A-ice
JASU	CE16, Elect 15/25, Air Starter
PVT ADV	Executive Flight Centre 122.95, 780-890-8640; Edmonton Shell Aerocentre 123.0, 780-890-1300 or 888-890-2477; Signature Flight Support 122.725 780-229-0500
MIL CON	Shell Aerocentre 780-890-1300
RWY DATA	Rwy 02(020°)/20(200°) 10,995x200 ASPH Rwy 12(120°)/30(300°) 10,200x200 ASPH Rwy 30 down 0.48%. RESA: All Rwys 295'
RWY CERT	Rwy 02 RVR 1200(1/4sm)/Rwy 20 RVR 1200(1/4sm) AGN VI Rwy 12 RVR 1200(1/4sm)/Rwy 30 RVR 1200(1/4sm) AGN VI
TWY CERT	Twy: A, AC, AD, AE, B, S AGN V Twy: K, Y AGN IIIB
TWY	Twys K, R, S, T, U, W & Y uncontrolled. Twys K, S & U rstd to acft with wingspan 36m (118') or less. T, R, Q, AD, V rstd to acft with wingspan 65m (213') or less. P, AC, O rstd to acft with wingspan 80m (262') or less. Twy A4: Rgt turns on to Twy A from Twy A4 rstd to acft with wingspan 35.9m (117.8') or less. Twy AE rstd to acft with wingspan 79.75m (262') or less when acft prkg on DF7/8/9 or prkg posn 73-81 are in use. Other acft may be auth with PPR fm OPR. Wide body acft with wingspan greater than 80m (262') twy A to AE PPR fm OPR.
APRON	General Aviation Itinerant prkg ctc Executive Flight Centre 122.95, 780-890-8640 or Edmonton Shell Aerocentre 123.0, 780-890-1300 or 888-890-2477. Access to Shell Aero Centre II from Apron III rstd to acft with wingspan of 36m (118') or less. Twy S, Apron II rstd to acft with wingspan 36m (118') or less. Apron I rstd to acft with wingspan 65m (213') or less when prkg positions in effect. Other acft may be auth with PPR fm OPR. Heavy lift heli not permitted on Apron II. Heli ctc OPR for prkg. South Apron: Acft with wingspans less than 36m (118') accessing gates 78 thru 88 use taxilane L. Acft with wingspans less than 65m (213'), greater than 36m (118') access accessing gates 78 thru 88 or parking positions 93 thru 105 use taxilane C. Acft with wingspans less than 36m (118') accessing DF7/8/9 or parking positions 93 thru 105 use taxilane R.
RCR	Opr CRFI, PLR/PCN
LIGHTING	02-AN(TE HI), 12-AN(TE HI), 20-AO(TE HI) P3, 30-AN(TE HI) P3
COMM	
RCO	Edmonton rdo 122.375 (FISE) 126.7 (bcst) (E) (emerg only 780-890-8386)
ATIS	128.0
CLNC DEL	124.1
GND	121.7 275.6
TWR	118.3 381.2 (E) (emerg only 780-890-4733)
ARR	Edmonton Tml 120.5 363.8 (E)
DEP	Edmonton Tml 133.65 363.8 (E)
VFR ADV	Twr 118.3 119.5 Edmonton Tml 127.4 (See Edmonton VTPC)
NAV	
VOR/DME	YEG 117.6 Ch 123 N53 11 08 W113 52 01 (2561')
DME	YEX 114.1 Ch 88 N53 18 11 W113 35 38 (2356')
ILS	IEG 110.3 (Rwy 02) RVR LOC reliable only within 10° either side of centreline. IFP 109.9 (Rwy 12) RVR LOC reliable only within 10° either side of centreline. IKB 109.1 (Rwy 30) RVR LOC reliable only within 10° either side of centreline.

ALBERTA

AERODROME/FACILITY DIRECTORY

EDMONTON INTL AB (Cont'd)

CYEG

PRO

Rgt hand circuits Rwy 30 (CAR 602.96). TRANSPONDER MANDATORY - Acft operating in Edmonton Class C require a discrete transponder code which may be obtained by filing a flt plan or itinerary or ctc 888-358-7526 at least 30 min prior to entering. Pilots to close VFR flt plans with Edmonton FIC (phone or FISE freq) when practicable or request closure fr ATC. For VFR routes see Edmonton VTPC or as directed by ATC.

NOISE ABATEMENT:

Turbo jet/Turbo fan acft

DEP: All Rwys NADP 1 or 2 (Noise Abatement Dep Proc). Rwy 12 no rgt turns W of KEKBI.

ARR: Avoid flying over the Town of Leduc below 5000' ASL.

REDUCED VISIBILITY PROCEDURES (RVR less than 2600 to 1200 ft)

If any portion of the airport drops below ½ SM or 2600 RVR but is at or above ¼ SM or 1200 RVR, the airport is considered to be operating in RVOP with no restrictions to aircraft or vehicles.

If any portion of the airport drops below ¼ SM or 1200 RVR, provided the runway of intended use is at or above ¼ SM or 1200 RVR, the following procedures shall be implemented:

- Any runway that is below ¼ SM or 1200 RVR will not be used for arrivals or departures.
- Restrictions apply to vehicles and aircraft on the manoeuvring area. Only one aircraft, helicopter or vehicle will be given permission to operate on the manoeuvring area at any given time (except as permitted below under Vehicle Exceptions).
- Towing of aircraft on the manoeuvring area is not permitted

Departures

An aircraft may be taxied for departure if the runway of intended use is at or above ¼ SM or 1200 RVR provided no other aircraft or vehicle is on the manoeuvring area.

If the visibility drops below ¼ SM or 1200 RVR after taxi clearance was issued, the aircraft may continue to taxi.

An aircraft may depart during RVOP operations provided the RVR serving the departure runway is at or above ¼ SM or 1200 RVR.

Arrivals

An aircraft may land and taxi if the runway of intended use is at or above ¼ SM or 1200 RVR provided no other aircraft or vehicle is on the manoeuvring area.

Arrivals will be in accordance with applicable approach minima or approach ban considerations. After landing, the aircraft may taxi provided no other aircraft or vehicle is on the manoeuvring area.

If the visibility for the runway of intended use drops below ¼ SM or 1200 RVR after an arriving aircraft crosses the final approach fix (FAF), the aircraft may land and taxi in.

ATS REQUIREMENTS:

PPR for all photo flt or survey work in Class C airspace within 35NM of CYEG. Map of survey/photo flt area rqr. CTC ATC 1-888-358-7526 at least 2 hrs prior to ETD.

PRO**Vehicle Exceptions**

A group of vehicles may be considered one movement provided they are traveling together and use a single call sign.

Vehicles are permitted to operate on an inactive runway. Once vehicles are established and restricted to remain on the inactive runway, RVOP may resume on the remaining manoeuvring area.

Emergency vehicles responding to emergency situations are exempt.

FLIGHT TRAINING RESTRICTIONS:

Circuits not auth. PPR for IFR and simulated IFR tng flts, ctc ATC 888-358-7526 no more than 24 hrs prior to ETD. Tng flts rstd to medium wt category or greater.

HELI OPS:

All heli ctc gnd ctl for dep instructions.

Heli flt over Twy S and Twy R rstd to 100 AGL & abv. Avoid flt over acft or pedestrians.

DE-ICING PROCEDURES

1. When de-icing is required, ctc EDMONTON DE-ICE on 122.850 30 min prior or as soon as possible with de-icing requirements. AEROMAG will assign the expected de-icing pad or holding area according to de-icing flow.

2. Prior to pushback and for taxi clearance ctc GROUND CONTROL on 121.700 with de-icing pad assignment.

3. On the Main Apron, hold short of the assigned de-icing pad and ctc AEROMAG PAD CONTROL on 122.775.

4. Follow AEROMAG PAD CONTROL instructions and guidance lines to the assigned de-icing bay or staging bay and confirm "BRAKES SET" when in position. Monitor GROUND CONTROL on 121.700 at all times.

5. When directed by AEROMAG PAD CONTROL, ctc ICEMAN on 130.125 (136.535 backup frequency) and confirm "BRAKES SET, AIRCRAFT CONFIGURED and ENGINES IDLE FOR DE-ICE."

6. When de-ice is complete, do not move aircraft. When directed by ICEMAN, ctc AEROMAG PAD CONTROL on 122.775 to obtain taxi instructions.

7. Follow AEROMAG PAD CONTROL instructions to exit de-icing. Hold short of TWY ALPHA and ctc GROUND on 121.700 to obtain clearance. Holding short of TWY ALPHA is only relevant to DF1 and DF2. DF3 aircraft exit onto Apron I.

ALBERTA

AERODROME/FACILITY DIRECTORY

EDMONTON / CALMAR (MAPLELANE FARM) AB

CMF2

REF	N53 11 04 W113 44 22 5.6SSE 15°E (2012) UTC-7(6) Elev 2520' VTA A5015	
OPR	Howard Lengert 780-985-3384 Reg	
PF	B1	
FLT PLN	FIC Edmonton 866-WXBRIEF (Toll free within Canada) or 866-541-4102 (Toll free within Canada & USA)	
RWY DATA	Rwy 07(074°)/25(254°) 2000x60 GRASS RCR Opr	
LIGHTING	07-(LO), 25-(LO) ARCAL-122.8 type J PN Opr	
COMM	ATF tfc 123.2 2NM below 3400 ASL	
PRO	Edmonton Intl CZ NE A/D. Edmonton Tml class "C" 3400 ASL and above overlies A/D. Edmonton Intl Class C airspace 3400 ASL and above overlies A/D. TRANSPONDER MANDATORY - Acft operating in Edmonton Class C require a discrete transponder code which may be obtained by filing a flt pln or ctc 888-358-7526 at least 30 min prior to entering. Air traffic advsy freq 123.2 Edmonton City Area in Class G and E airspace.	
CAUTION	P-line 40 AGL aprx 600' east of rwy.	

ALBERTA

AERODROME/FACILITY DIRECTORY

MILLET / CREEKVIEW AB

CRK2

REF	N53 04 44 W113 30 34 1.6WSW 15°E (2012) UTC-7(6) Elev 2510' VTA A5015	
OPR	Carl Scott Coggan/Janet Coggan 780-387-4937 Reg PPR	
FLT PLN	FIC Edmonton 866-WXBRIEF (Toll free within Canada) or 866-541-4102 (Toll free within Canada & USA)	
RWY DATA	Rwy 06(060°)/24(240°) 2200x75 GRASS	
RCR	Opr No win maint. Rwy may be soft in spring.	
COMM	ATF tfc 123.5 5NM up to but not including 3400 ASL	
PRO	Circuit hgt 3300 ASL	
CAUTION	P-line marked with balls 37 AGL at Thld Rwy 06. High voltage p-line 0.5NM E Thld 24.	

ALBERTA

AERODROME/FACILITY DIRECTORY

CALMAR / WIZARD LAKE AB

CWL3

REF	N53 06 57 W113 46 19 9SSE 15°E (2016) UTC-7(6) Elev 2600' aprx VTA A5015	
OPR	Rivervista Ventures Inc 780-554-2470 Fax 780-452-5079 Reg PPR	
PF	D-1,2,3,4,5,6,7,8	
FLT PLN		
FIC	Edmonton 780-890-8386 or Edmonton 866-WXBRIEF (Toll free within Canada) or 866-541-4102 (Toll free within Canada & USA)	
ACC	Edmonton IFR 888-358-7526	
SERVICES		
S	4,5	
RWY DATA	Rwy 16(165°)/34(345°) 2534x80 GRASS Thld 16 displ 100'. Rwy 08(076°)/26(256°) 1396x80 GRASS	
RCR	Opr Ltd win maint	
COMM		
ATF	tfc 123.2 2NM 3400 ASL	
PRO	Edmonton Intl CZ NE of A/D. Edmonton Tml Class C 3500 ASL and abv overlies A/D. TRANSPONDER MANDATORY. Acft operating in Edmonton Class C airspace require a discrete transponder code which may be obtained by filing a flt pln or ctc 888-358-7526 at least 30 min prior to entering. Air traffic advsy freq 123.2 Edmonton City Area in Class G and E airspace.	